

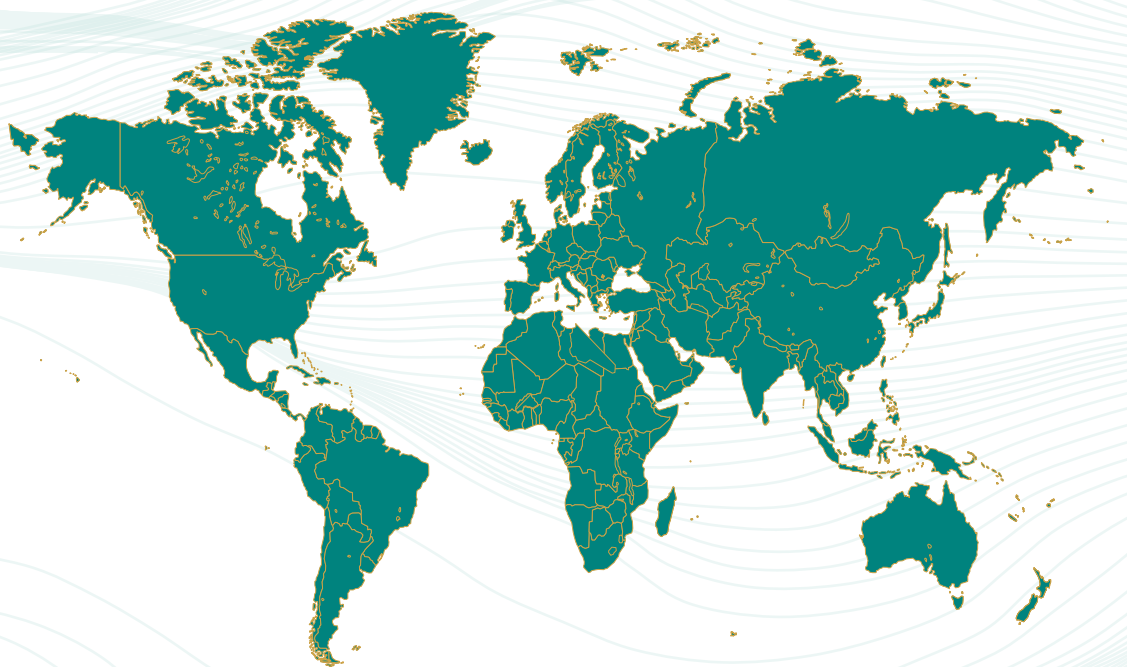
A circular portrait of a smiling woman with long brown hair, wearing a white lace top and a large flower-shaped earring. The portrait is set against a background of green foliage.

**SMILE
& LOVE**

ABOUT OUR COMPANY

With the headquarter in Beijing, Clickalign has 2 branch offices, 3 medical centers and 3 manufacturing facilities located in several cities in China. By the end of 2021, Clickalign had 80,000+ clinics registered online and had provided 100,000+ orthodontic treatments to patients.

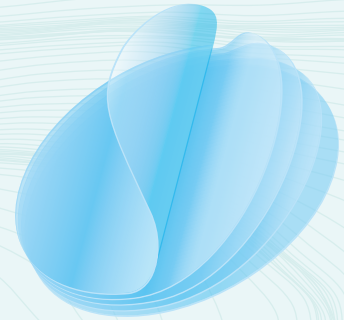
Our unique online operation system (Click OS) enables us to significantly simplify and speed up the planning–feedback–production process, therefore, making the orthodontic process optimized for both dentists and patients.



ADVANTAGES OF CLICKALIGN

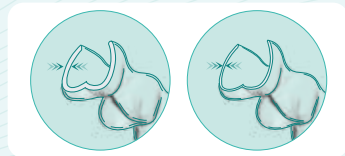
Biomaterial

According to the application needs of clear aligners and the biomechanical needs of orthodontic treatment, through rigorous selection of raw materials, creative adjustment of the proportion of components and optimization of processing technics, we successfully developed the IPN (Interpenetrating Polymer Network) film, whose hardness/softness is adaptive to various cases.



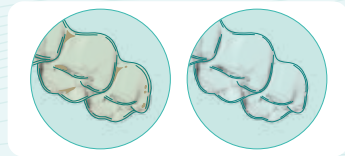
IPN Film's Advantages

(Compared to majority of the films used by other clear aligner manufacturers)



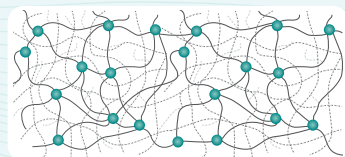
Lighter and Thinner

While achieving the required correction force, the aligner is also more invisible and its joint adaptability is better as well. After forming, the thinnest part of aligner could be as thin as 0.3mm.



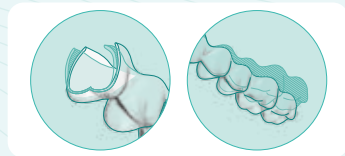
Better Stain Resistance

In complex oral environment, it is much less possible for aligners to get stained.



Stronger Tear Resistance

After forming, it is much more difficult for aligners to tear.



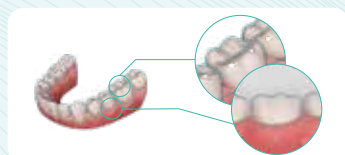
Higher Resilience

IPN film can match the appropriate rigidity and flexibility for tooth movement, and apply force precisely, so as to reduce the problems of fracture or failure caused by repeated taking-off & inserting and complex dental arch malocclusion.



More Durable and Stable

The stress relaxation curve shows that IPN film has more durable and stable force release performance than other films.



Better Fitting

The unique surface adaptability and good thermoplasticity significantly improve the cavity covering performance, which is better for force expression.



Automation

Our automated production line can make the whole production process standardized and automatically operated, including data analyzing and importing, automatic film pressing, robotic cutting, sorting and packaging, etc.

Each aligner will go through strict disinfection process before leaving the factory and has their own traceable source code to ensure the traceability of quality and safety. While the production quality is guaranteed, the production efficiency has also been increased by three times compared to manual mode – the manufacturing lead-time can be reduced to as short as 3 working days.

● Treatment Planning

Experienced Orthodontic Treatment Planning Team

Clickalign orthodontic treatment planning team is led by orthodontic experts from the Stomatological Hospital of Peking University and consists of nearly 100 full-time dentists, of which 80% have treated more than 1000 patients on their own. With expertise in dentistry, we provide patients with professional and thorough invisible orthodontic treatment plans.

Standardized and Efficient Service

After receiving qualified essential clinical data of the patient, our Production Team and Medical Center will finish the pre-processing and treatment plan within 3 working days. Then the production process starts upon the treatment plan is confirmed. Our automated production lines are able to complete aligner fabrication within 3-5 working days.



Software

Click OS is a new generation of AI tooth arrangement software and comprehensive processing system that integrates different technologies including orthodontic parameter modeling, measurement, diagnosis, outcome prediction, treatment planning, treatment efficacy monitoring, tooth arrangement database, treatment decision-making, etc.



- Improve the treatment planning efficiency by parameterizing the tooth model, unifying the diagnostic criteria and simplifying the analysis process of treatment plan.
- Integrate the successful tooth arrangement technology from clinicians and apply it to actual cases, which reduces the damage of aligners.
- Improve the success rate of orthodontic treatment by integrating fine-tuning matching technology, verifying the feasibility of the treatment plan with big data and enhancing the continuity of treatment.
- Strengthen the collection, mining and analysis of data, then come up with better medical analyses and clinical pathway plans, which allows us to provide more suitable treatment plans for patients.

WORKFLOW CHART





 Clickalign



 Clickalign



 Clickalign



 Clickalign

Beijing Dijia Medical Device Co., Ltd.
info@clickalign.com